

# TURNOUT MODEL

EIGHT DOÑA ANA COUNTY HOUSE DISTRICTS



# NEW MEXICO COUNTIES 2014 TURNOUT

- DOÑA ANA COUNTY TURNOUT 36%
- BERNALILLO COUNTY 40%
- SANTA FE COUNTY 49%
- SANDOVAL COUNTY 43%
- VALENCIA COUNTY 43%
- GRANT COUNTY 44%
- STATEWIDE TURNOUT 41%

Scroll Down



## NEW MEXICO TURNOUT

- DOÑA ANA COUNTY TURNOUT **36%**
- STATEWIDE TURNOUT **41%**

Scroll Down



# GROUPED BY REGION WITHIN DISTRICTS

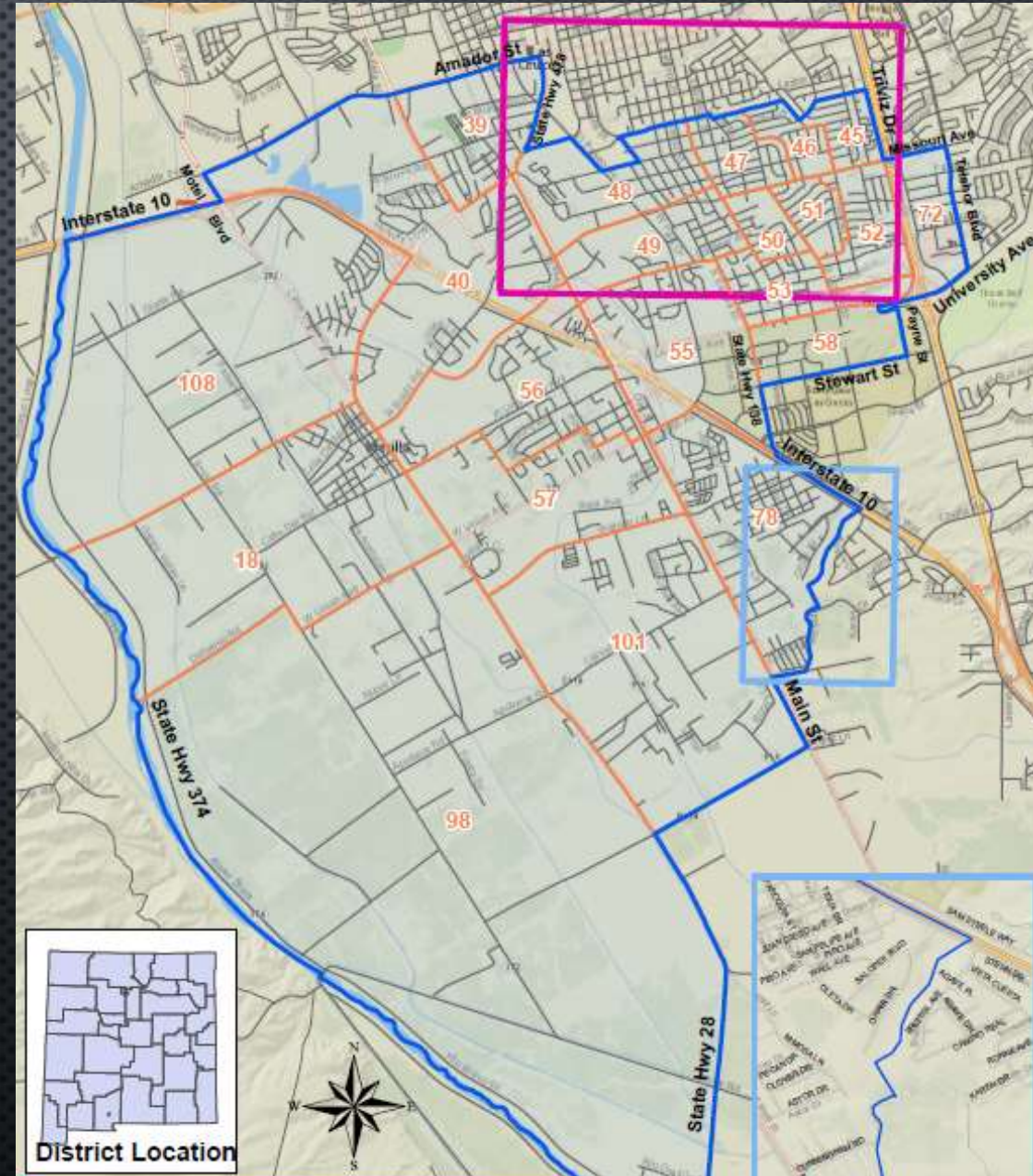
- PRECINCTS HAVE BEEN GROUPED INTO REGIONS WITHIN EACH DISTRICT

Scroll Down

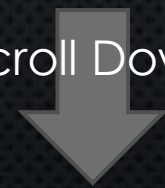


# DISTRICT 33

- 3 REGIONS
  - MESILLA-TORTUGAS AREA
  - SOUTH MESQUITE-UNIVERSITY AREA
  - TOMBAUGH-MESILLA SOUTH



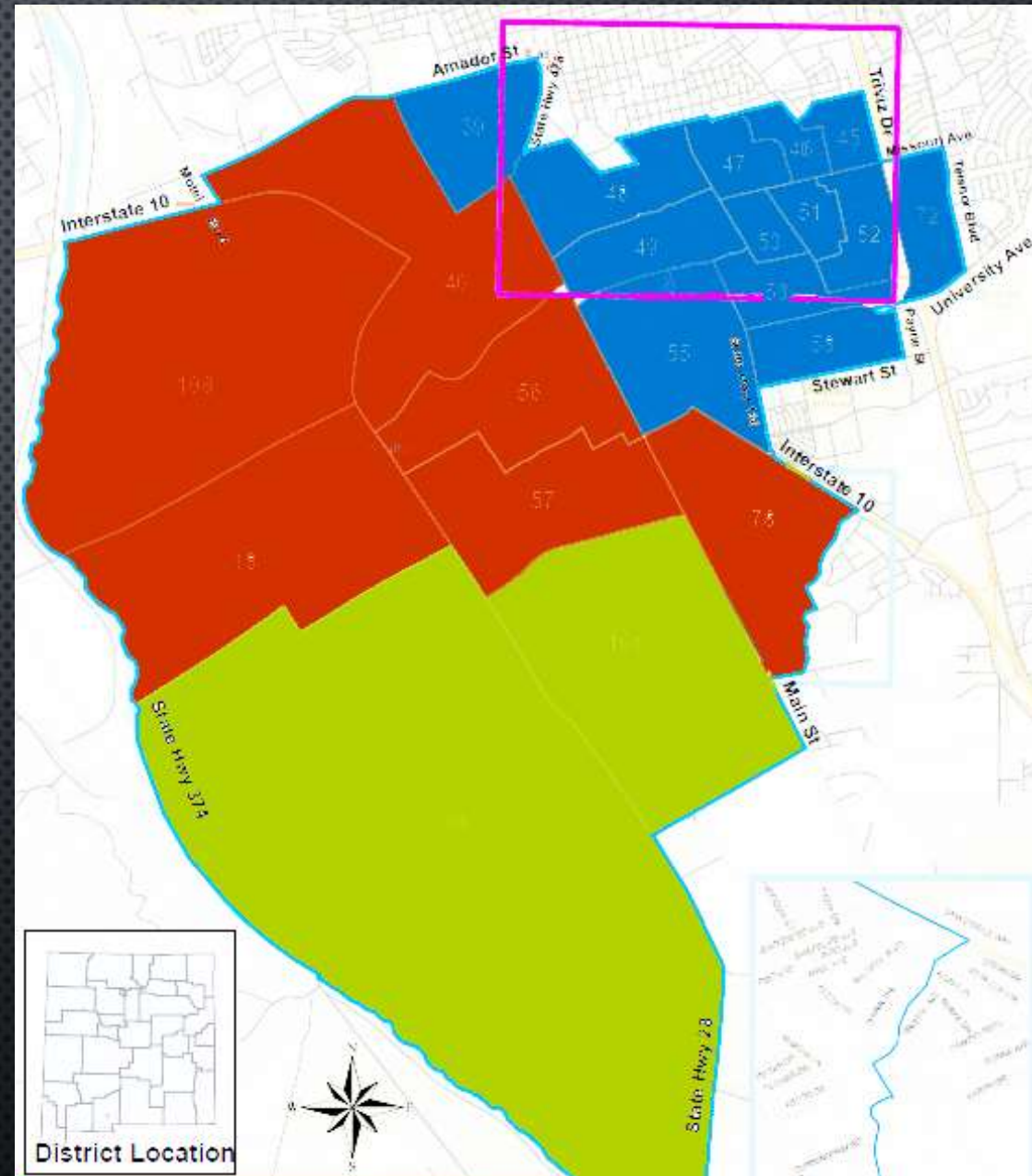
Scroll Down



# DISTRICT 33

- MESILLA-TORTUGAS AREA
  - REGISTRATIONS 5769
  - TURNOUT 2238
  - 39%
- SOUTH MESQUITE-UNIVERSITY AREA
  - REGISTRATIONS 11202
  - TURNOUT 2743
  - **24%**
- TOMBAUGH-MESILLA SOUTH
  - REGISTRATIONS 1734
  - TURNOUT 781
  - 45%

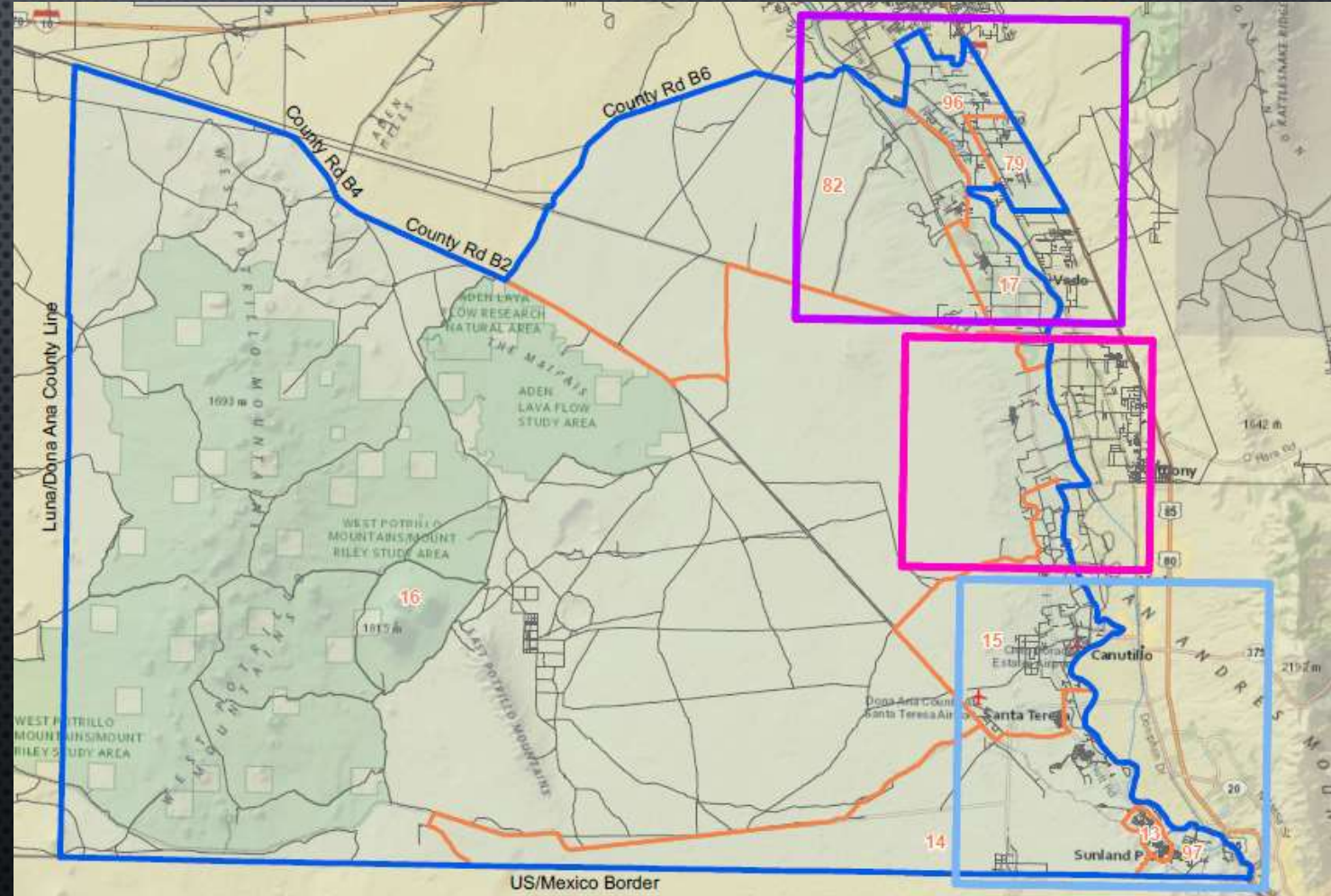
Scroll Down



# DISTRICT 34

- W. VADO-MESQUITE – PECAN VALLEY-SAN MIGUEL
- W. ANTHONY – CHAMBERINO
- SANTA TERESA – LA UNION
- SUNLAND PARK

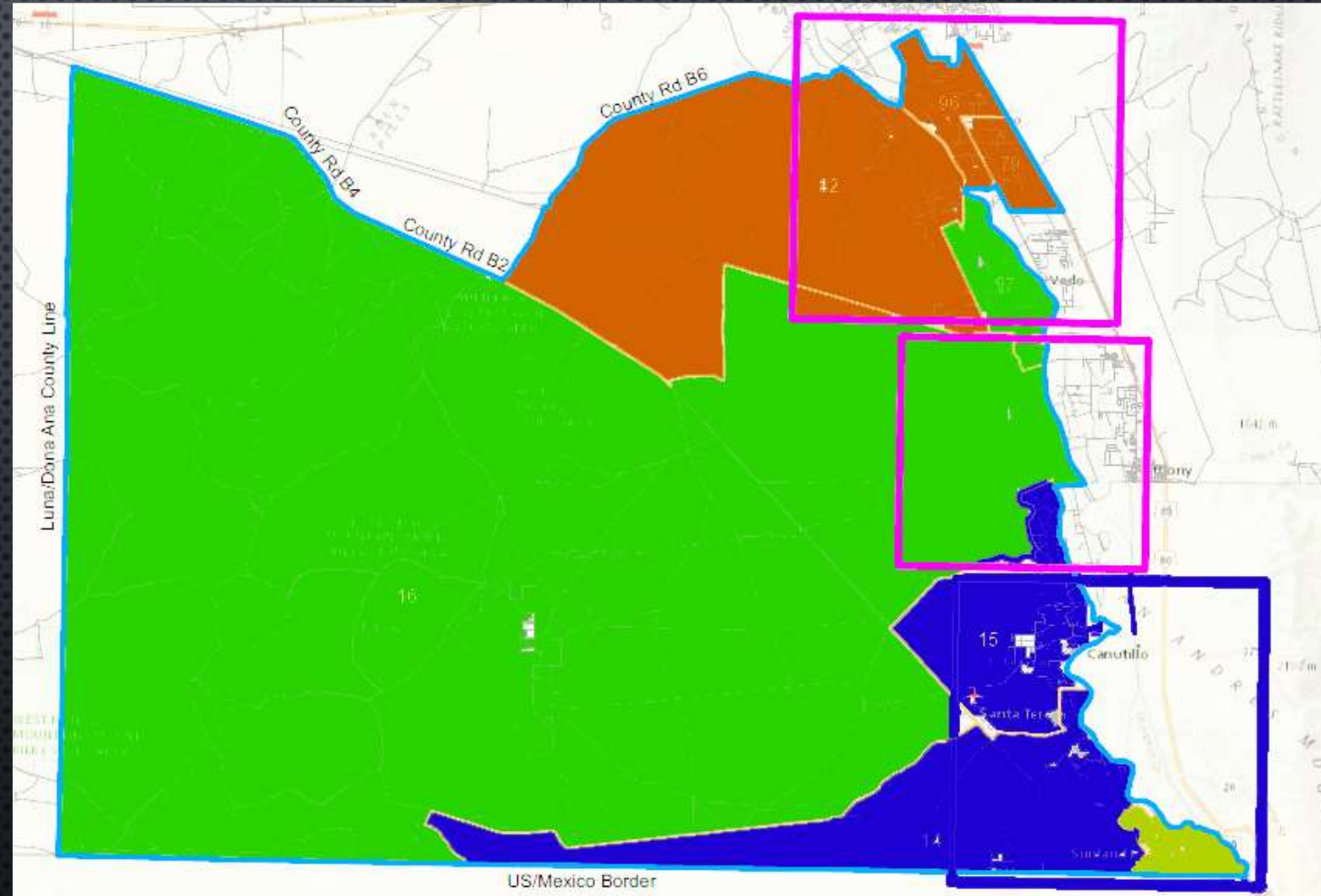
Scroll Down



# DISTRICT 34

- W. VADO-MESQUITE – PECAN VALLEY-SAN MIGUEL
  - REGISTRATIONS 2369
  - TURNOUT 901
  - 38%
- W. ANTHONY – CHAMBERINO
  - REGISTRATIONS 1679
  - TURNOUT 592
  - **35%**
- SANTA TERESA – LA UNION
  - REGISTRATIONS 3993
  - TURNOUT 1340
  - **34%**
- SUNLAND PARK
  - REGISTRATIONS 5009
  - TURNOUT 754
  - **15%**

Scroll Down

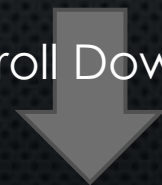




# DISTRICT 35

- COUNTRY CLUB-ELKS-SONOMA NORTH
- NORTH MESQUITE-APODACA PARK
- ALAMEDA-WOMEN'S PIONEER PARK

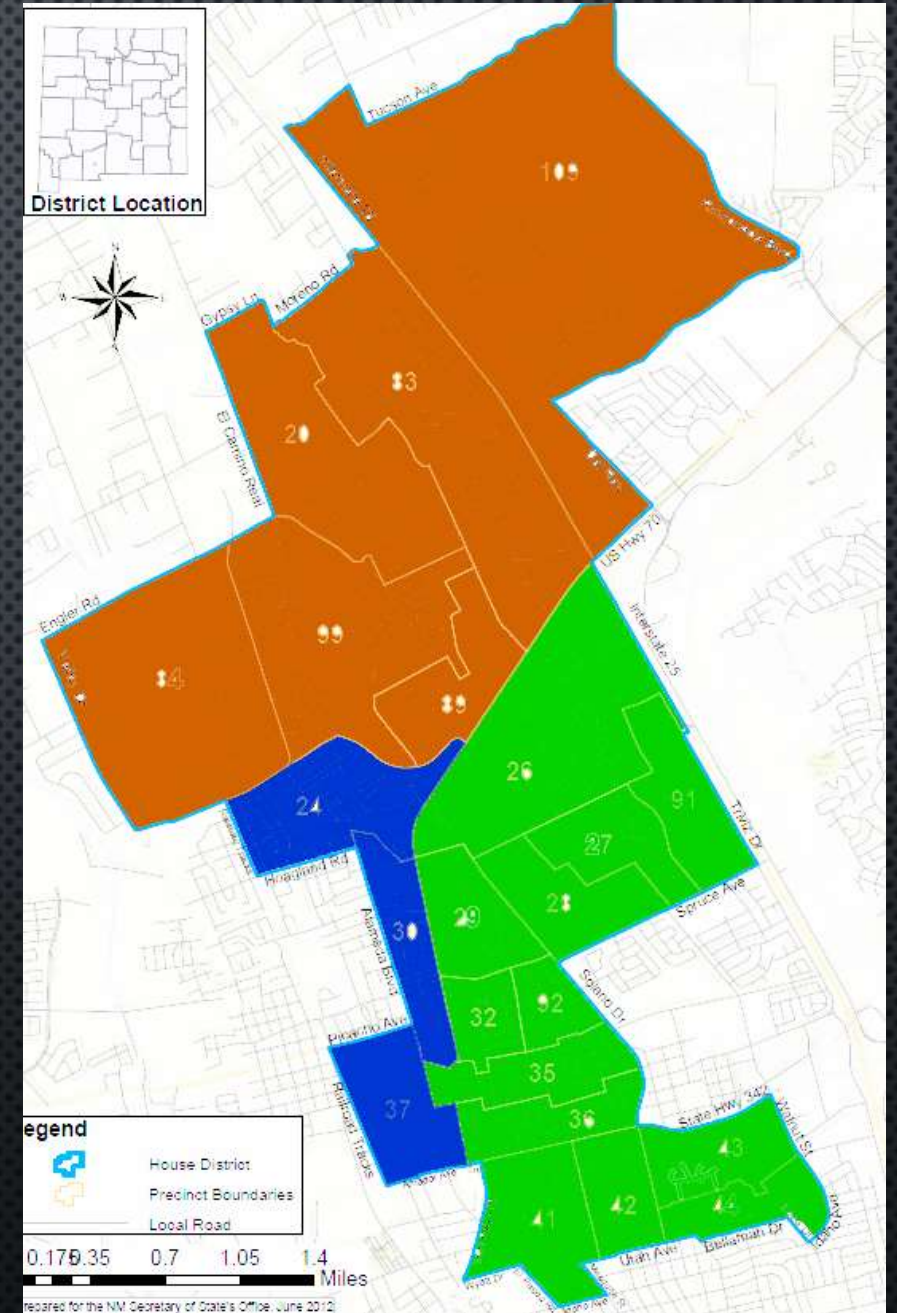
Scroll Down



# DISTRICT 35

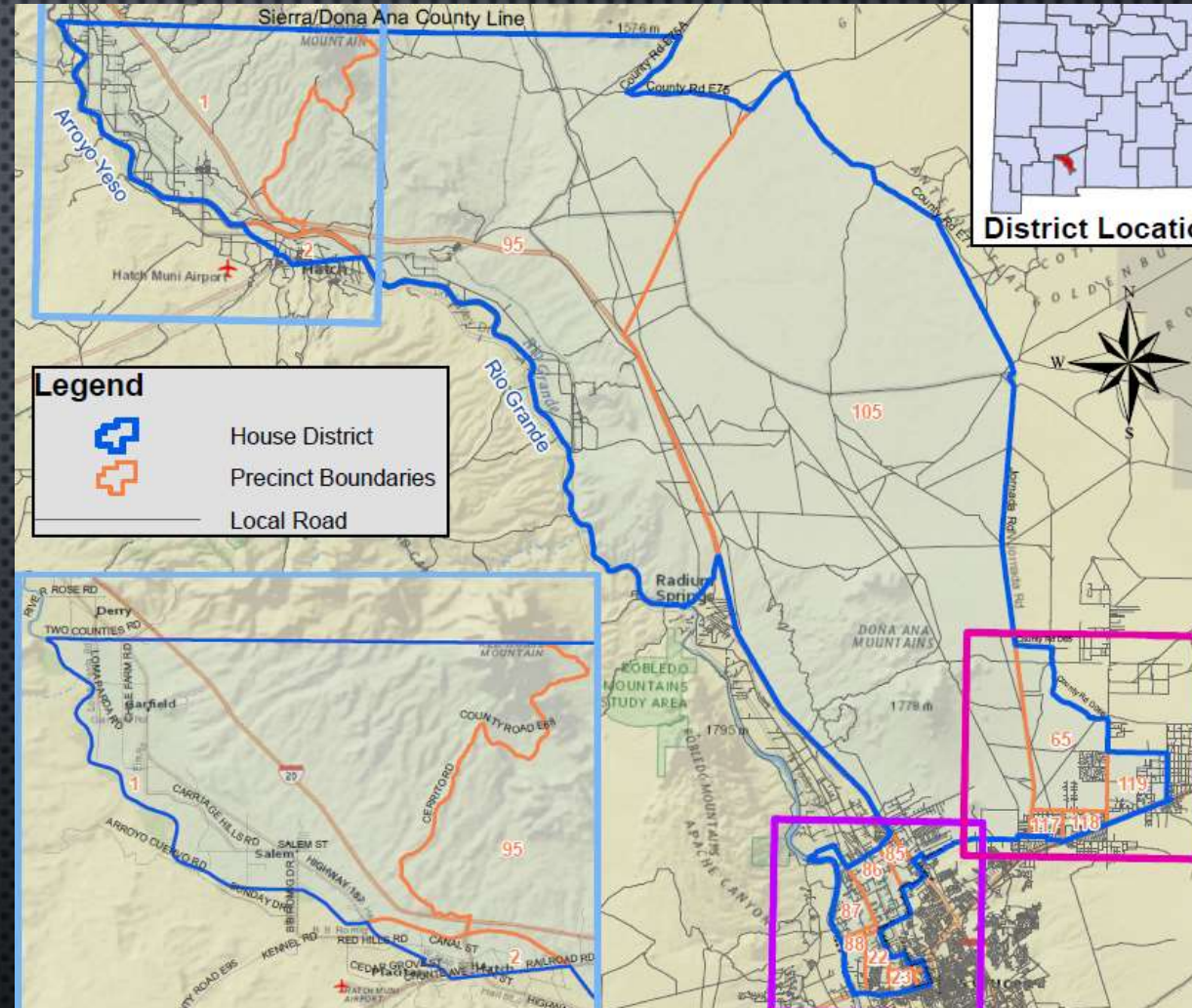
- COUNTRY CLUB-ELKS-SONOMA NORTH
  - REGISTRATIONS 7523
  - TURNOUT 3209
  - 43%
- NORTH MESQUITE-APODACA PARK
  - REGISTRATIONS 7660
  - TURNOUT 2671
  - **35%**
- ALAMEDA-WOMEN'S PIONEER PARK
  - REGISTRATIONS 1785
  - TURNOUT 715
  - 40%

Scroll Down



# DISTRICT 36

- SALEM-N. HATCH-RINCON
- E. DOÑA ANA/N.DELRAY-HWY 70/HOMAN
- SHALOM COLONY-VISTA
- MAYFIELD AREA

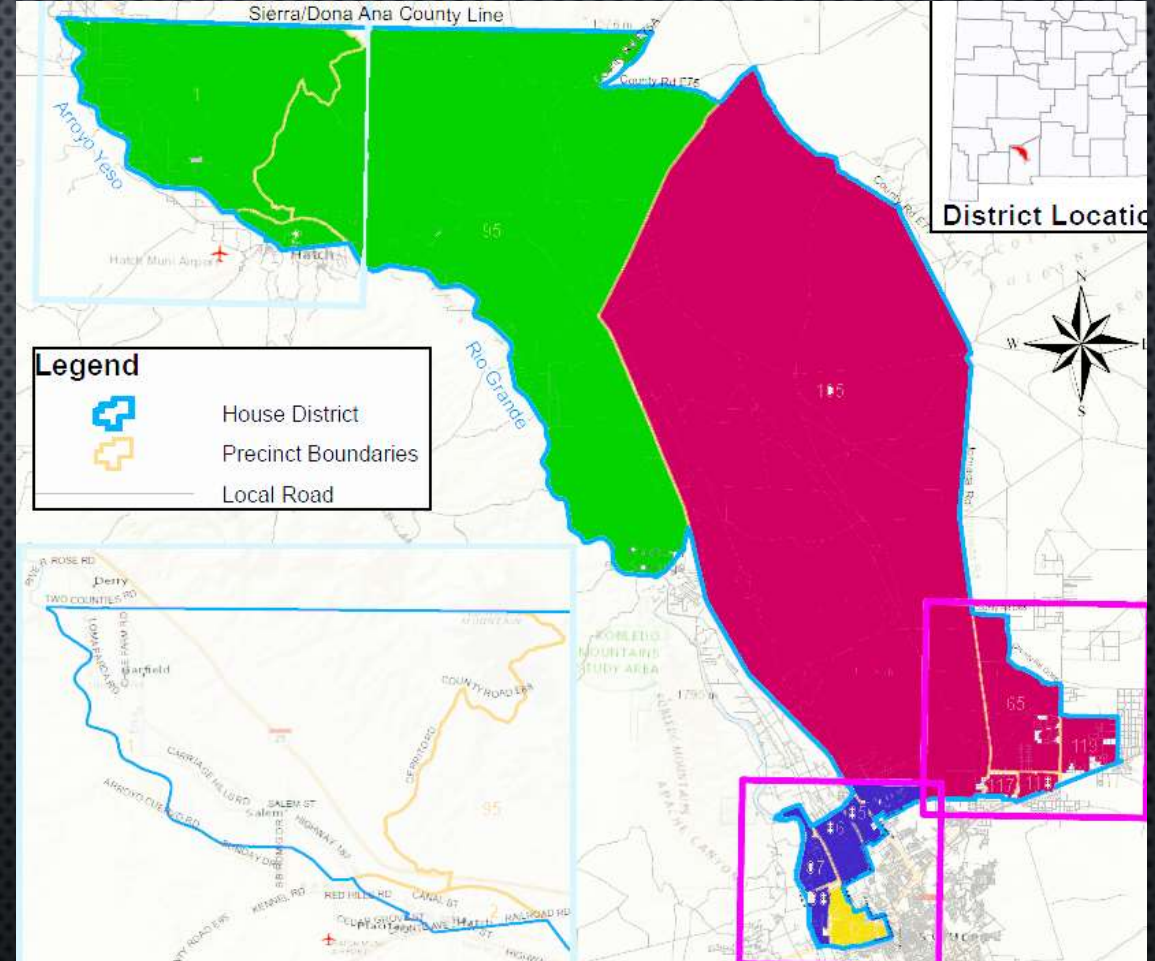


Scroll Down



# DISTRICT 36

- SALEM-N. HATCH-RINCON
  - REGISTRATIONS 1167
  - TURNOUT 435
  - 37%
- E. DOÑA ANA/N. DELRAY-HWY 70/HOMAN
  - REGISTRATIONS 5935
  - TURNOUT 1877
  - **32%**
- SHALOM COLONY-VISTA
  - REGISTRATIONS 4225
  - TURNOUT 1928
  - 46%
- MAYFIELD AREA
  - REGISTRATIONS 4363
  - TURNOUT 1663
  - 38%

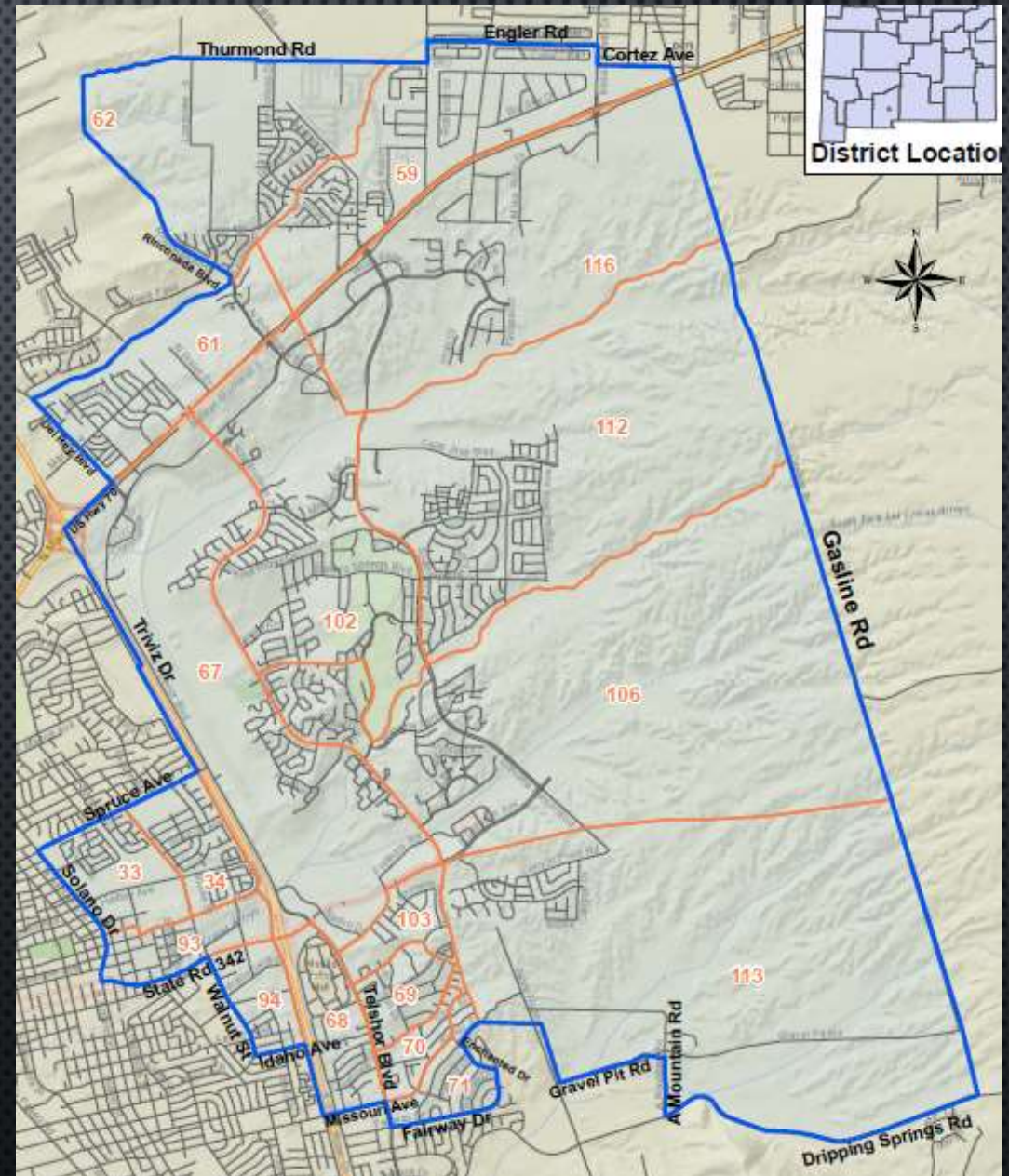


Scroll Down

# DISTRICT 37

- JORNADA AREA
- SONOMA RANCH-ROADRUNNER AREA
- EAST OF I-25-LOHMAN/TELHOR FOOTHILLS

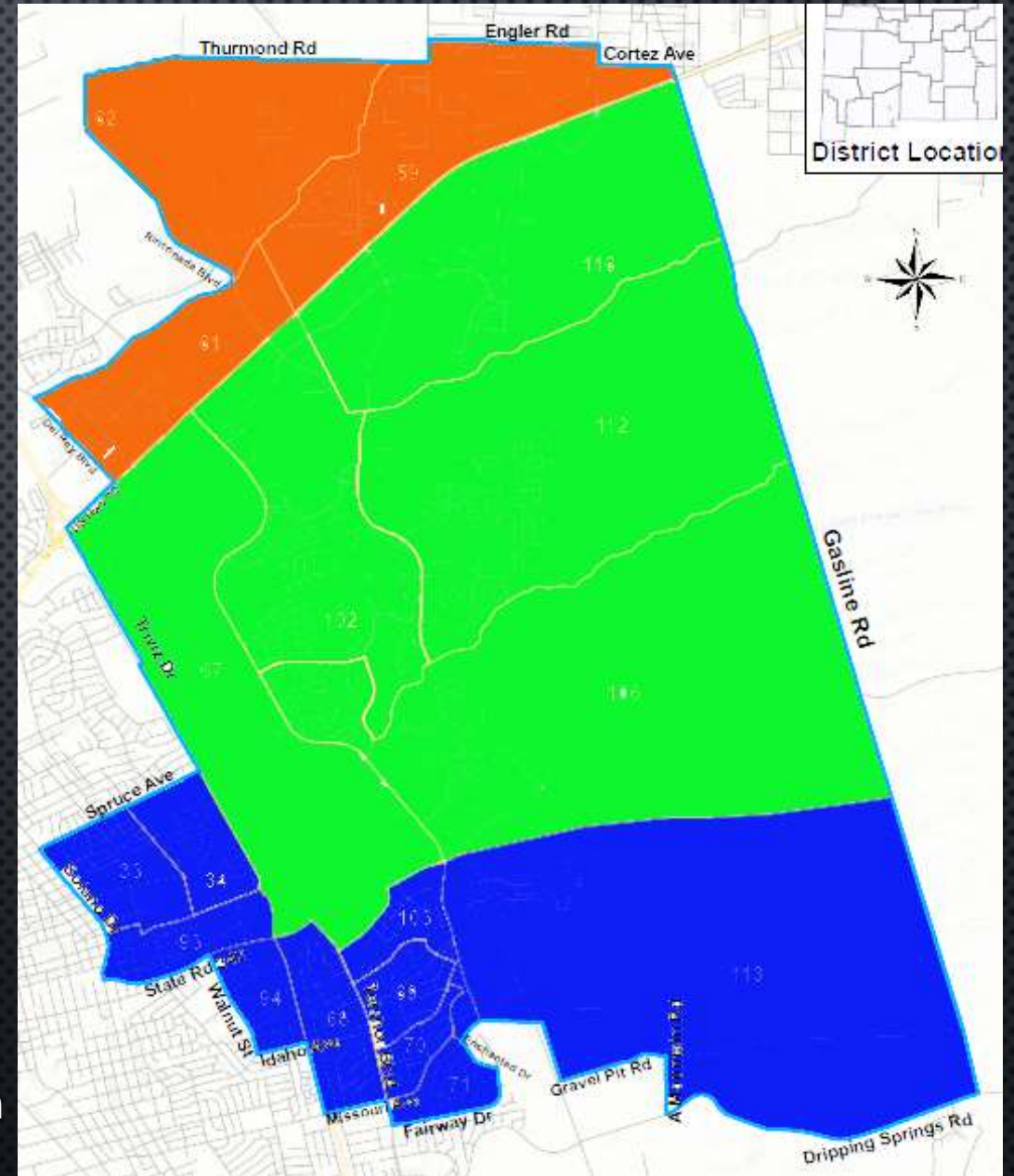
Scroll Down



# DISTRICT 37

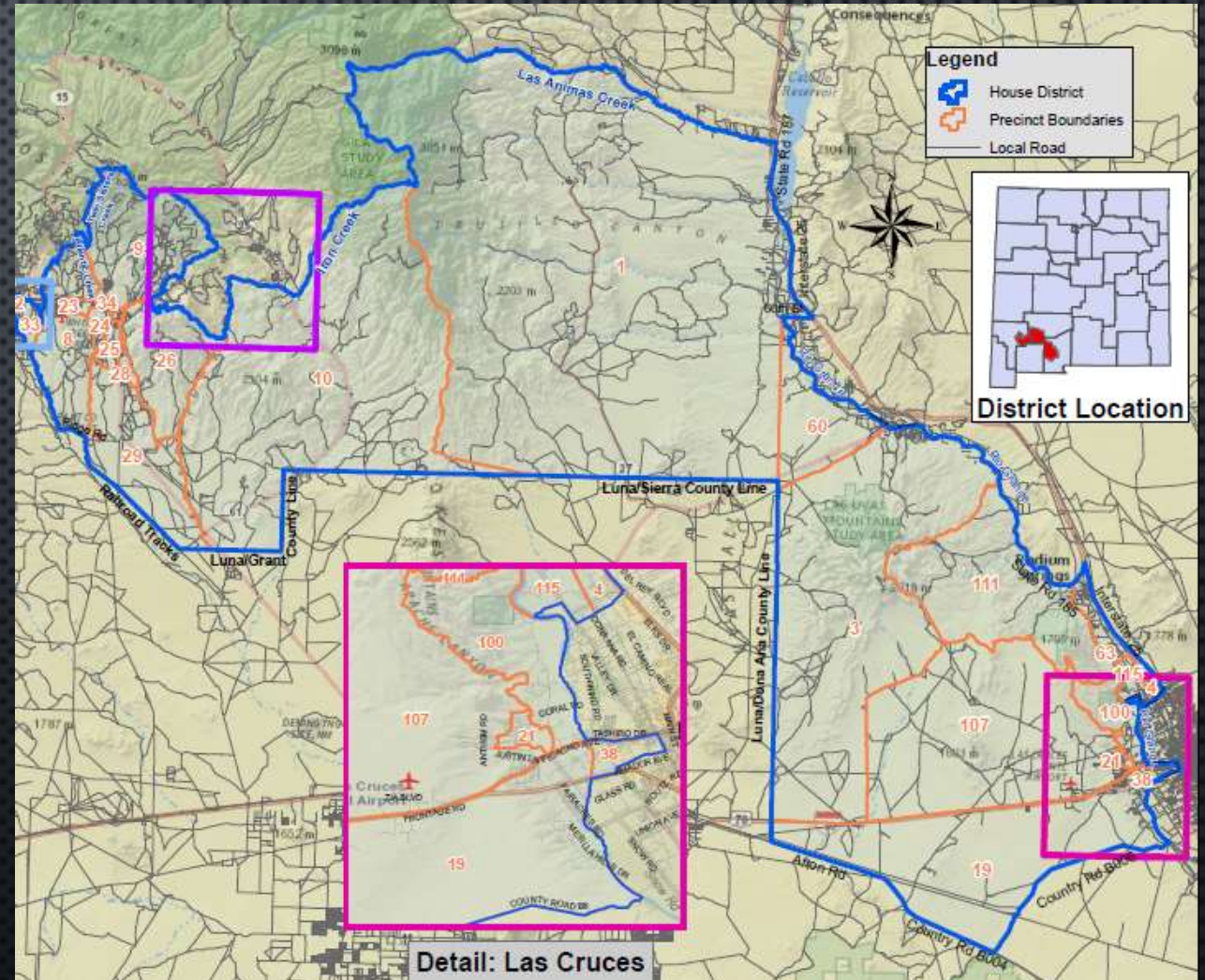
- JORNADA AREA
  - REGISTRATIONS 4846
  - TURNOUT 2088
  - 46%
- SONOMA RANCH-ROADRUNNER AREA
  - REGISTRATIONS 8918
  - TURNOUT 4210
  - 47%
- EAST OF I-25-LOHMAN/TELHOR FOOTHILLS
  - REGISTRATIONS 7385
  - TURNOUT 2771
  - 37%

Scroll Down

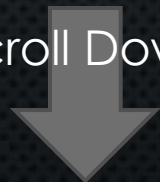


# DISTRICT 39

- HATCH WEST-RADIUM SPRINGS-W. DONA ANA-OLD PICACHO
- PICACHO HILLS-FAIRACRES



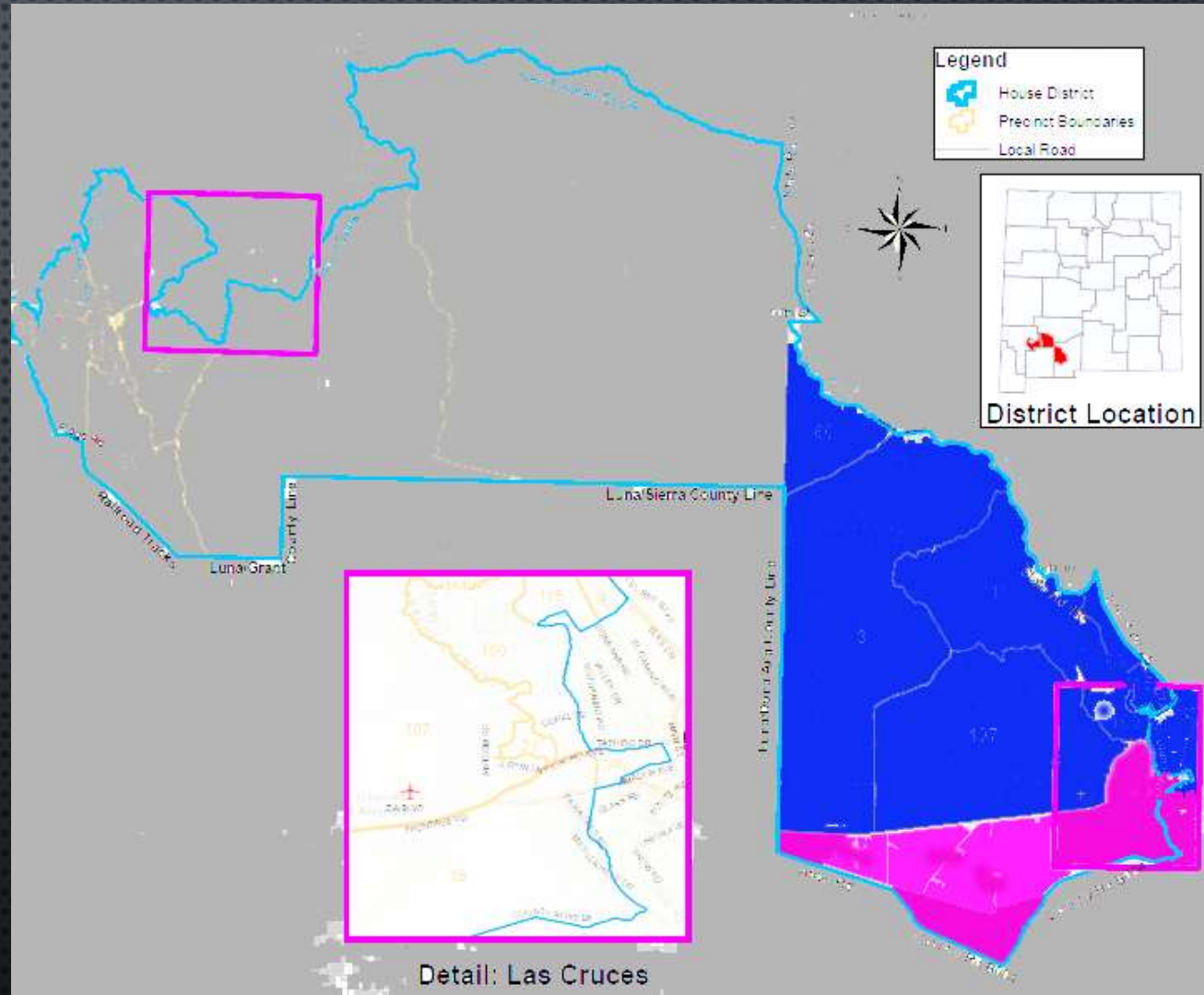
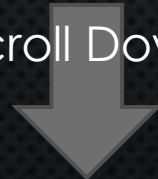
Scroll Down



# DISTRICT 39

- HATCH WEST-RADIUM SPRINGS-W. DOÑA ANA-OLD PICACHO
  - REGISTRATIONS 5191
  - TURNOUT 2553
  - 49%
- PICACHO HILLS-FAIRACRES
  - REGISTRATIONS 3664
  - TURNOUT 1469
  - 40%
- **PRECINCT 4 (W. DOÑA ANA)**
  - REGISTRATIONS 931
  - TURNOUT 307
  - **33%**

Scroll Down

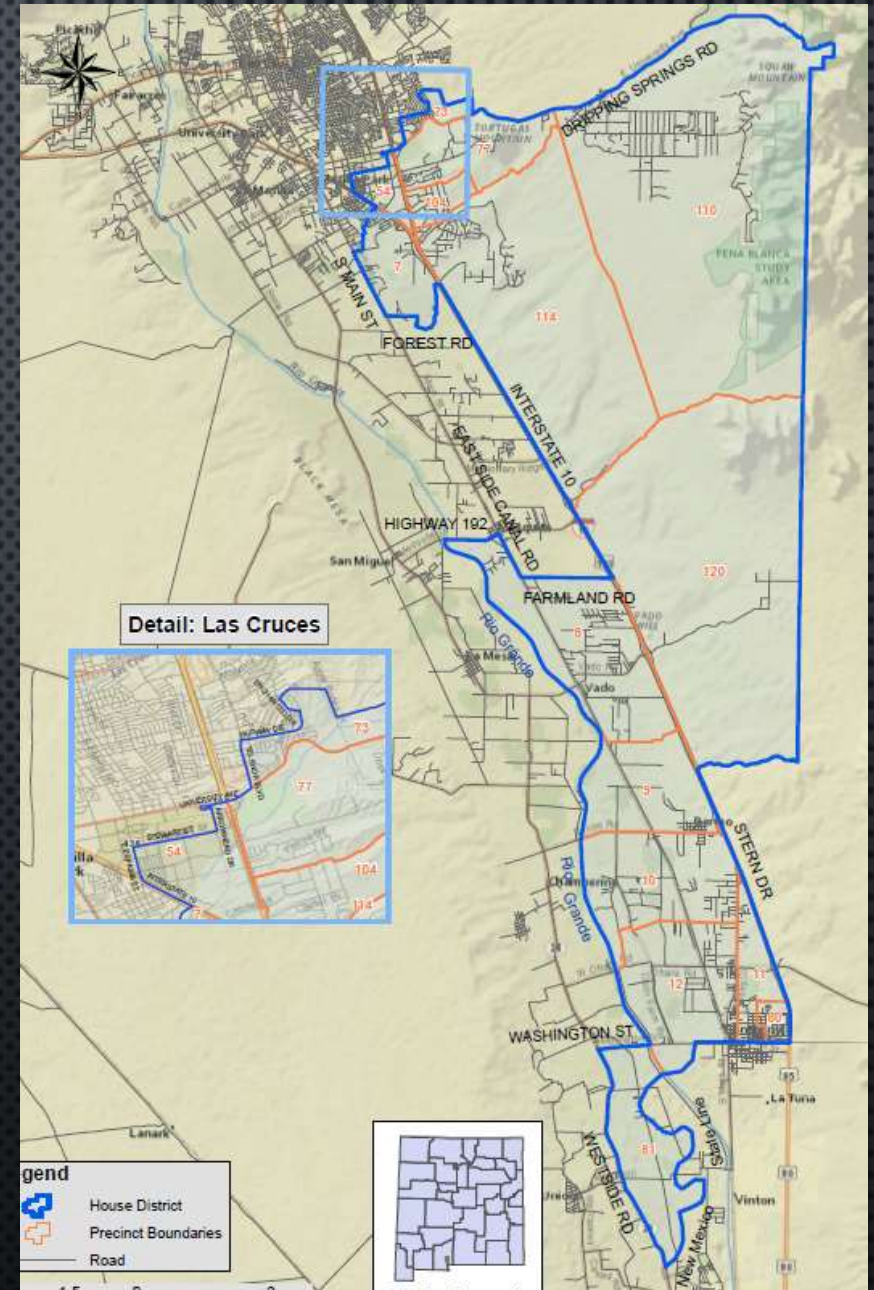
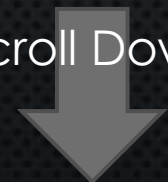




# DISTRICT 52

- UNIVERSITY PARK-PECAN VALLEY NORTH
- TORTUGAS-DRIPPING SPRINGS
- VADO-ANTHONY

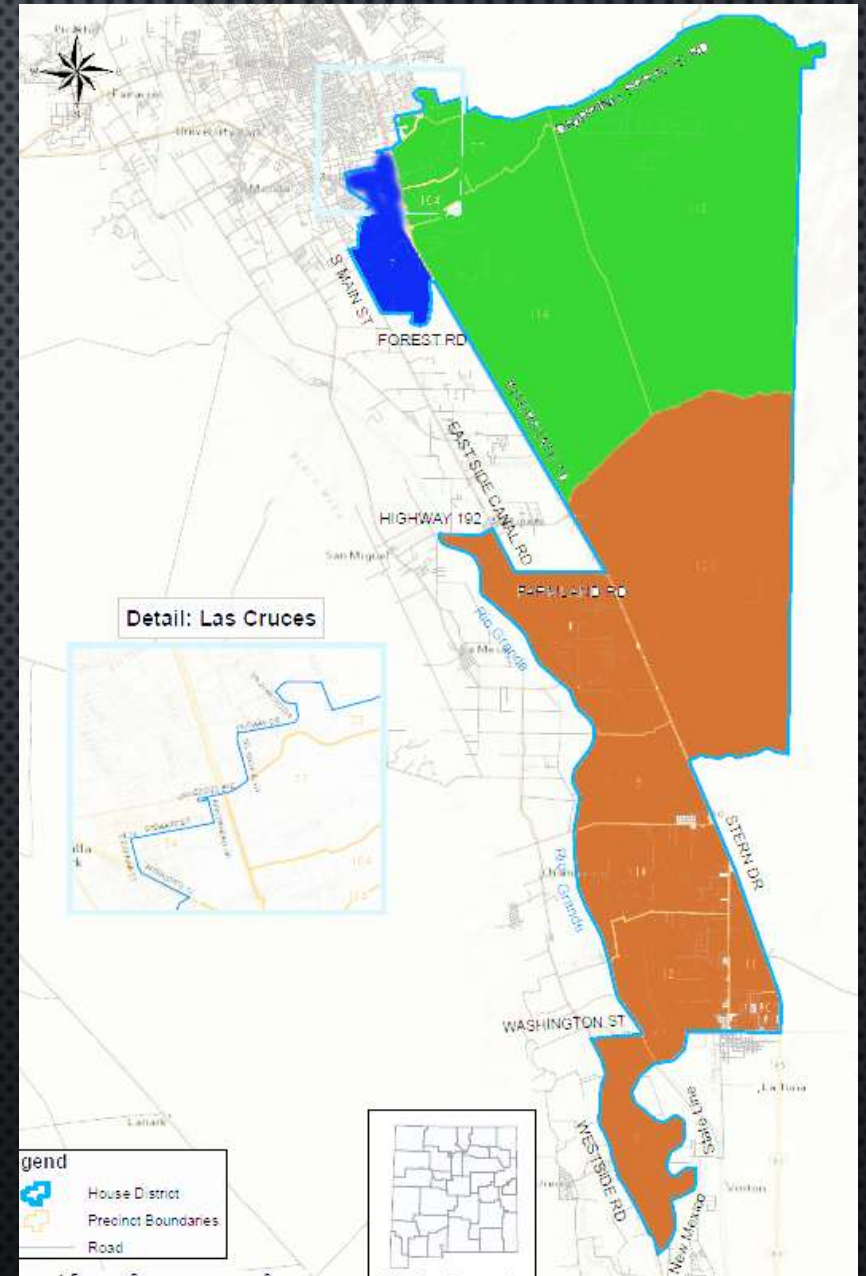
Scroll Down



# DISTRICT 52

- UNIVERSITY PARK-PECAN VALLEY NORTH
  - REGISTRATIONS 1979
  - TURNOUT 466
  - **24%**
- TORTUGAS-DRIPPING SPRINGS
  - REGISTRATIONS 4595
  - TURNOUT 2625
  - **57%**
- VADO-ANTHONY
  - REGISTRATIONS 5984
  - TURNOUT 1407
  - **24%**

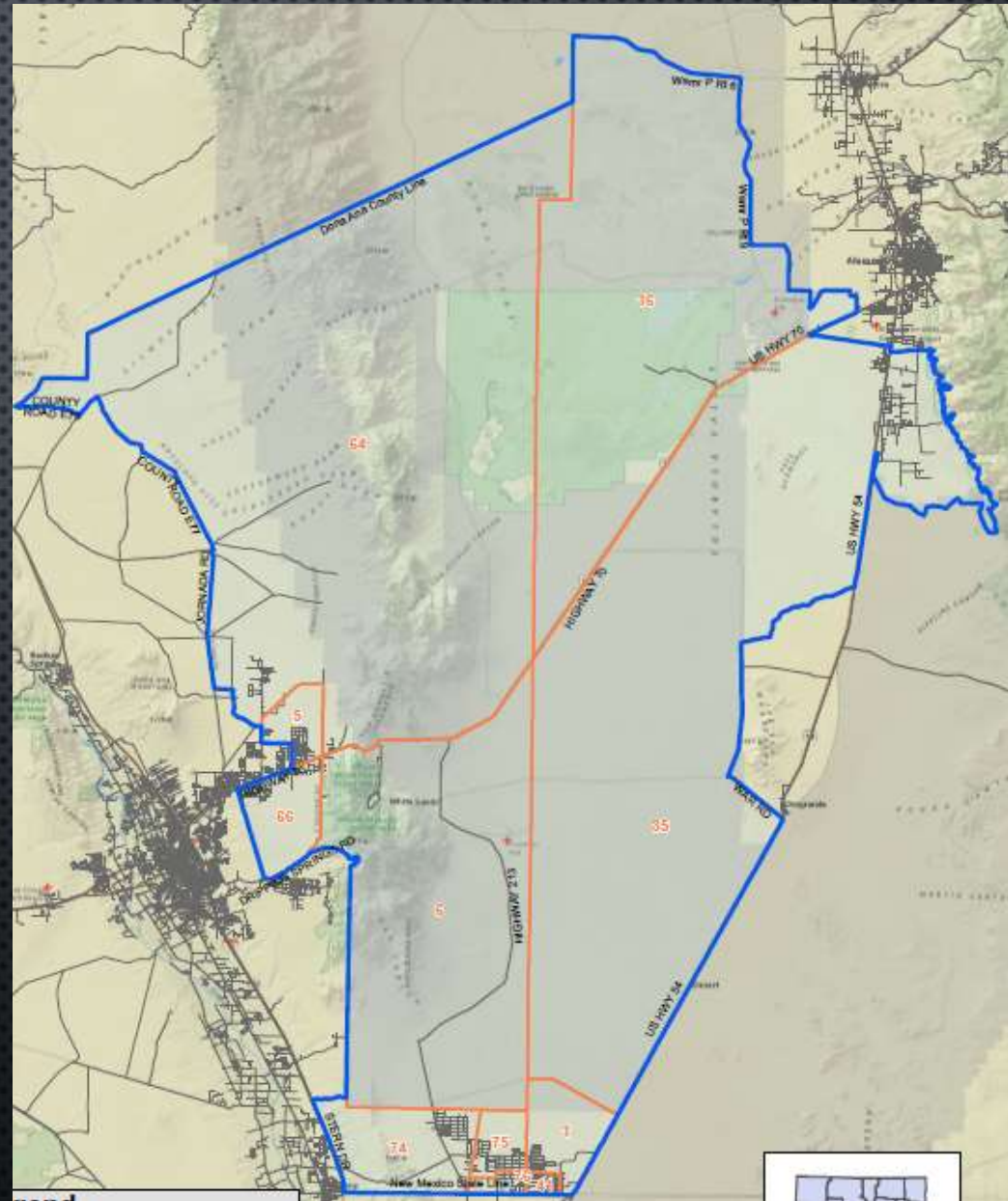
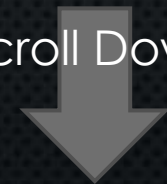
Scroll Down



# DISTRICT 53

- CHAPARRAL
- ORGAN-MOONGATE

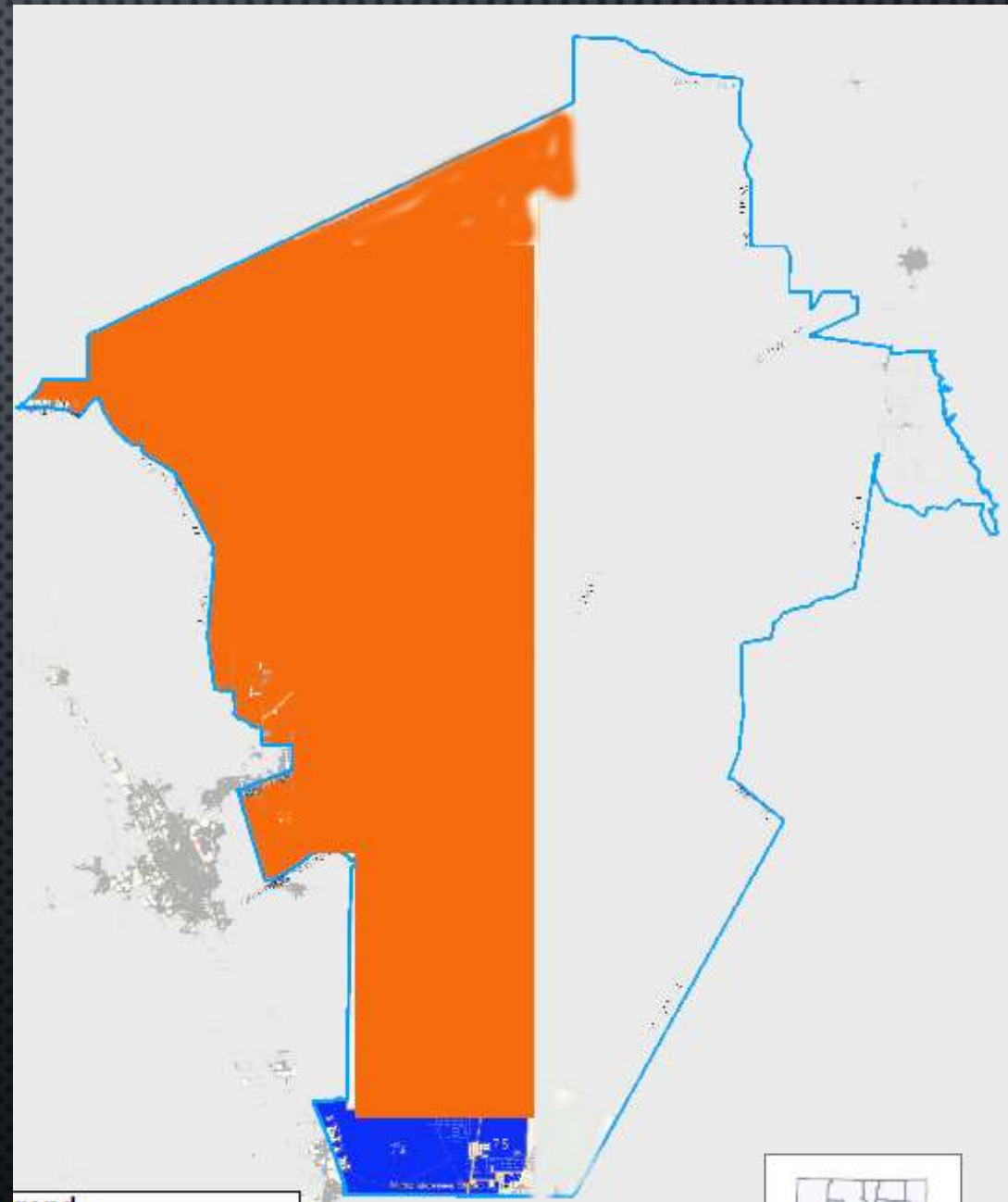
Scroll Down



# DISTRICT 53

- CHAPARRAL
  - REGISTRATIONS 2783
  - TURNOUT 685
  - **25%**
- ORGAN-MOONGATE
  - REGISTRATIONS 3981
  - TURNOUT 1256
  - **32%**

Scroll Down



## 2<sup>ND</sup> CONGRESSIONAL DISTRICT

- DE BACA COUNTY 56%
- CATRON COUNTY 56%
- GUADALUPE COUNTY 53%
- HIDALGO COUNTY 46%
- SIERRA COUNTY 46%
- SOCORRO COUNTY 44%
- GRANT COUNTY 44%
- LUNA COUNTY 44%
- VALENCIA COUNTY 43%
- LINCOLN COUNTY 43%
- CIBOLA COUNTY 39%
- OTERO COUNTY 39%
- EDDY COUNTY 38%
- CHAVES COUNTY 38%
- **DOÑA ANA COUNTY 36%**
- LEA COUNTY 29%

END