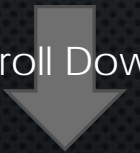


TURNOUT MODEL

EIGHT DOÑA ANA COUNTY HOUSE DISTRICTS

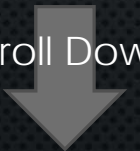
Scroll Down



NEW MEXICO COUNTIES 2014 TURNOUT

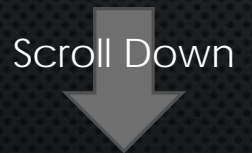
- DOÑA ANA COUNTY TURNOUT 36%
- BERNALILLO COUNTY 40%
- SANTA FE COUNTY 49%
- SANDOVAL COUNTY 43%
- VALENCIA COUNTY 43%
- GRANT COUNTY 44%
- STATEWIDE TURNOUT 41%

Scroll Down



NEW MEXICO TURNOUT

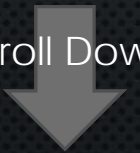
- DOÑA ANA COUNTY TURNOUT **36%**
- STATEWIDE TURNOUT **41%**



GROUPED BY REGION WITHIN DISTRICTS

- PRECINCTS HAVE BEEN GROUPED INTO REGIONS WITHIN EACH DISTRICT

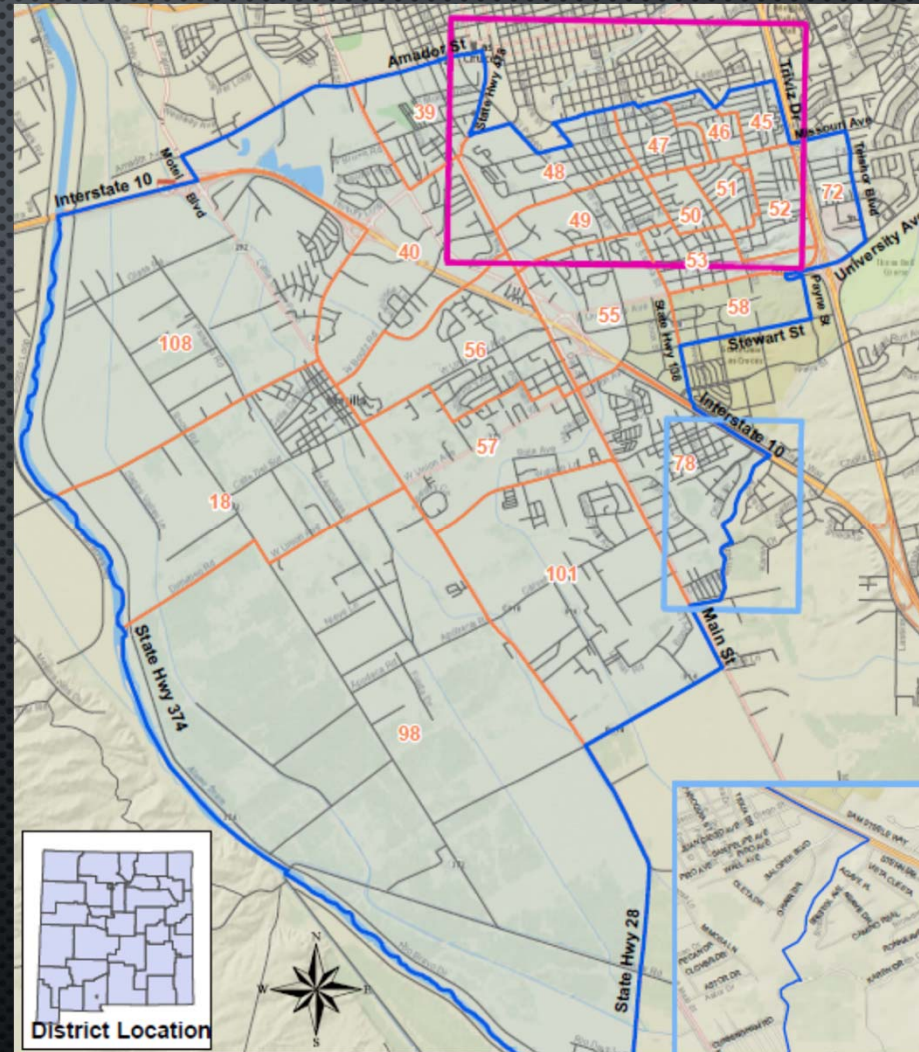
Scroll Down



DISTRICT 33

- 3 REGIONS
 - MESILLA-TORTUGAS AREA
 - SOUTH MESQUITE-UNIVERSITY AREA
 - TOMBAUGH-MESILLA SOUTH

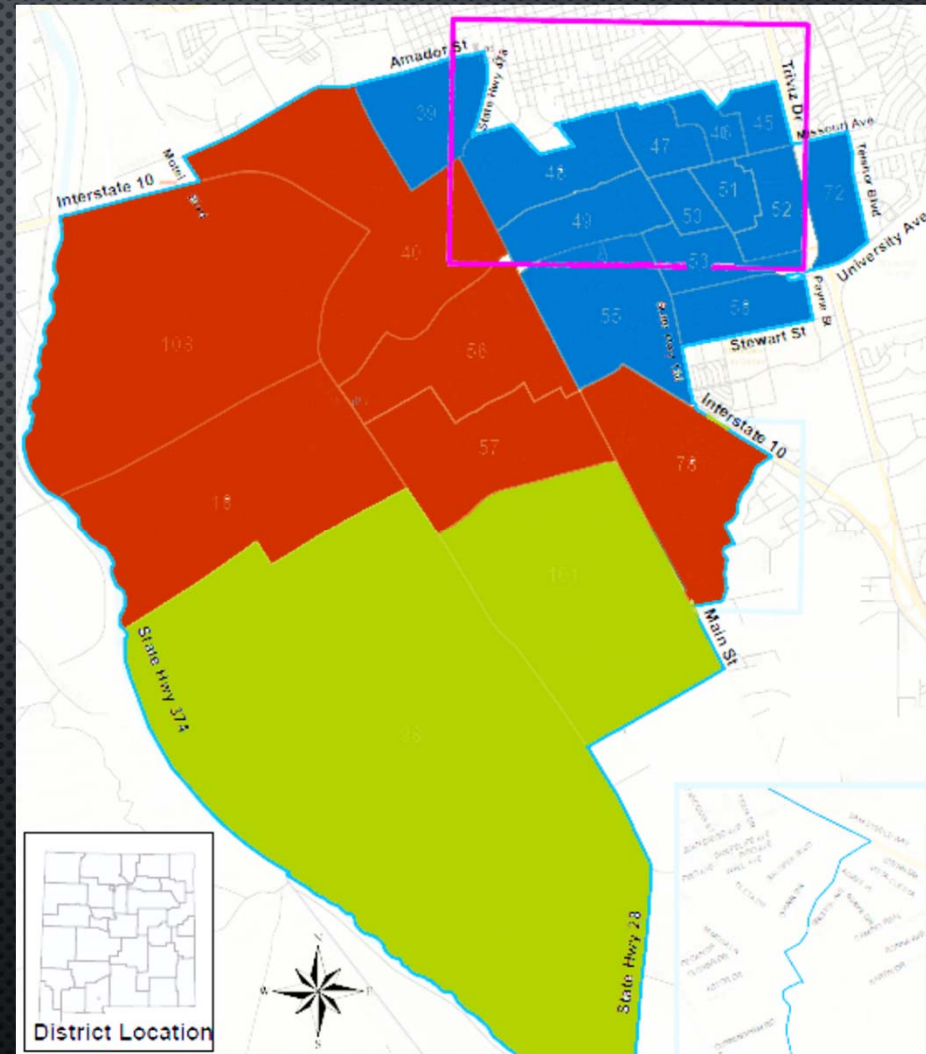
Scroll Down



DISTRICT 33

- MESILLA-TORTUGAS AREA
 - REGISTRATIONS 5769
 - TURNOUT 2238
 - 39%
- SOUTH MESQUITE-UNIVERSITY AREA
 - REGISTRATIONS 11202
 - TURNOUT 2743
 - **24%**
- TOMBAUGH-MESILLA SOUTH
 - REGISTRATIONS 1734
 - TURNOUT 781
 - 45%

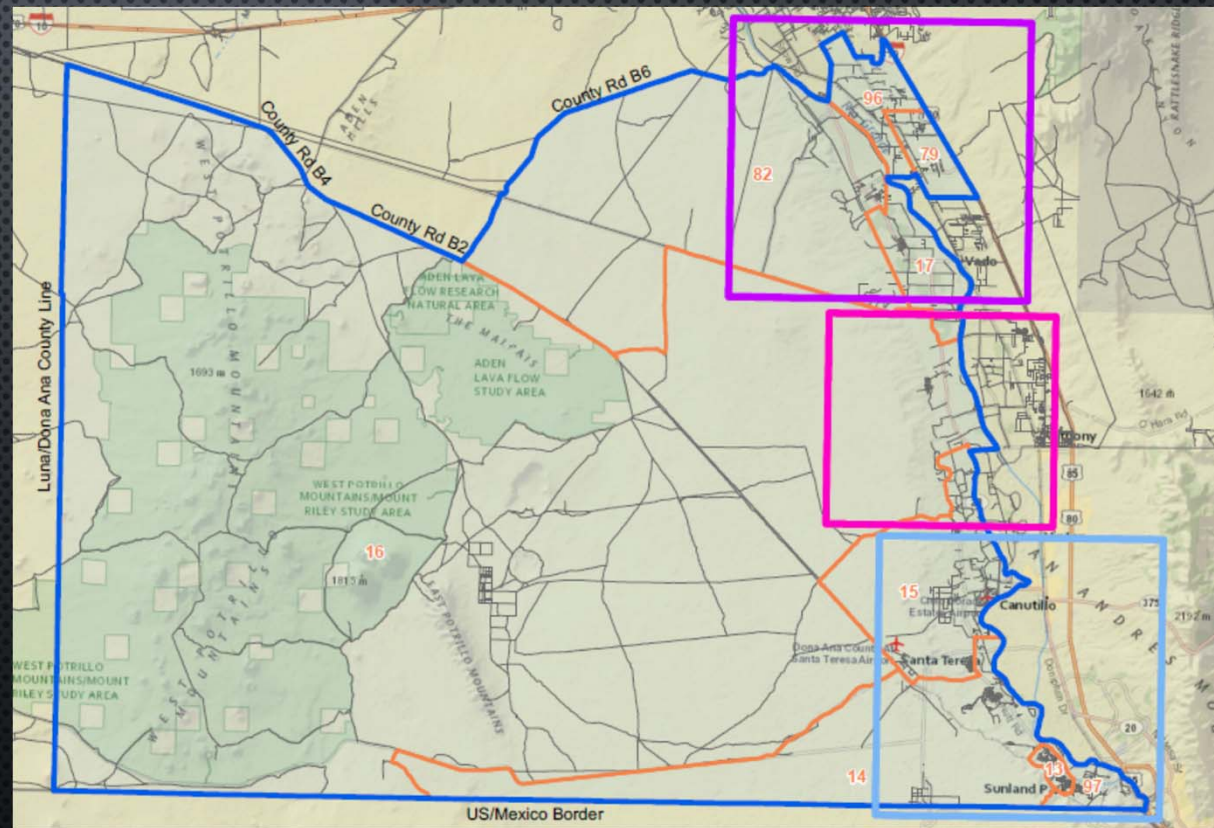
Scroll Down



DISTRICT 34

- W. VADO-MESQUITE – PECAN VALLEY-SAN MIGUEL
- W. ANTHONY – CHAMBERINO
- SANTA TERESA – LA UNION
- SUNLAND PARK

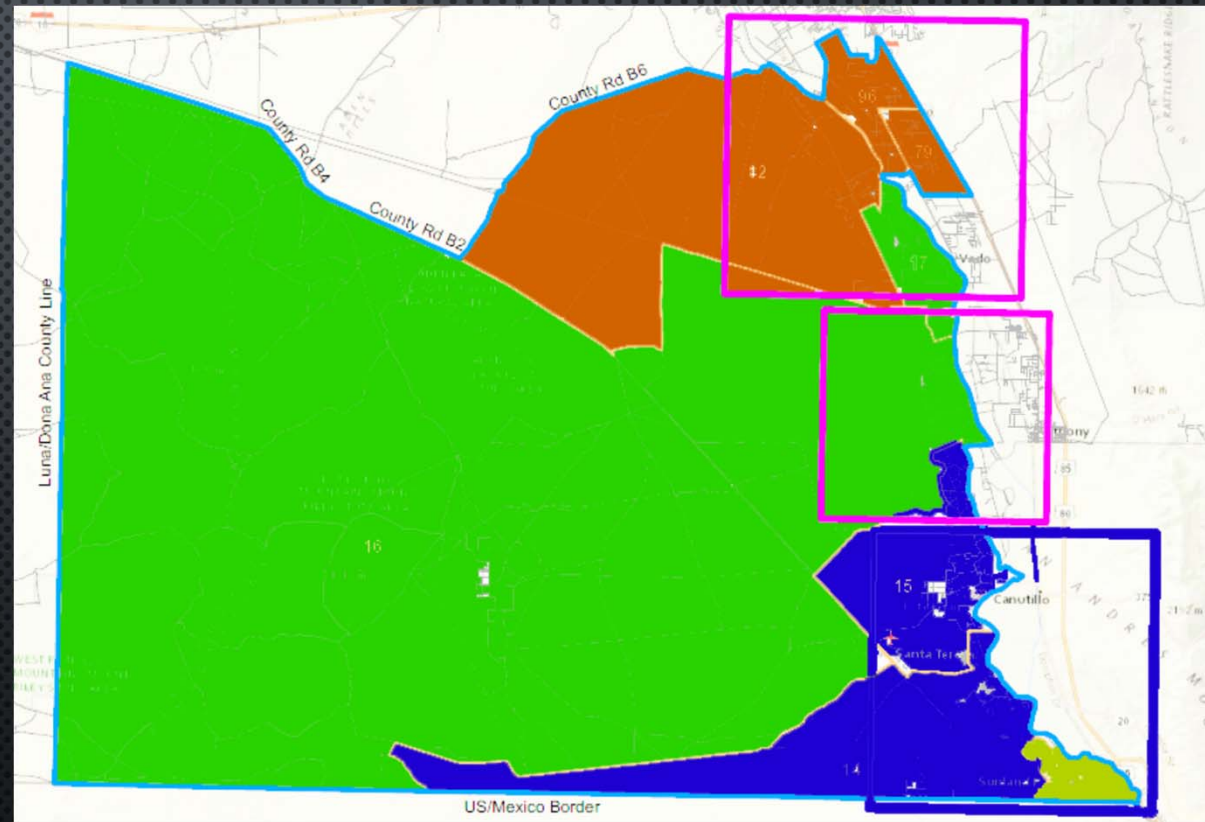
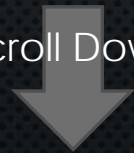
Scroll Down



DISTRICT 34

- W. VADO-MESQUITE – PECAN VALLEY-SAN MIGUEL
 - REGISTRATIONS 2369
 - TURNOUT 901
 - 38%
- W. ANTHONY – CHAMBERINO
 - REGISTRATIONS 1679
 - TURNOUT 592
 - 35%
- SANTA TERESA – LA UNION
 - REGISTRATIONS 3993
 - TURNOUT 1340
 - 34%
- SUNLAND PARK
 - REGISTRATIONS 5009
 - TURNOUT 754
 - 15%

Scroll Down



DISTRICT 35

- COUNTRY CLUB-ELKS-SONOMA NORTH
- NORTH MESQUITE-APODACA PARK
- ALAMEDA-WOMEN'S PIONEER PARK

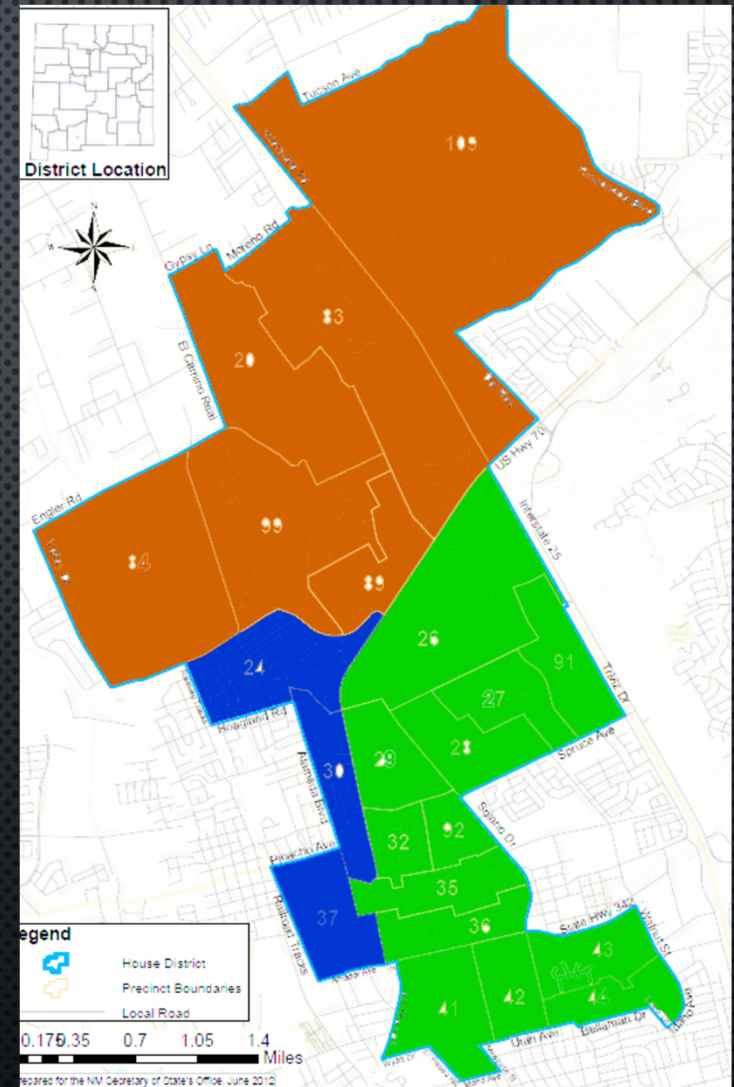
Scroll Down



DISTRICT 35

- COUNTRY CLUB-ELKS-SONOMA NORTH
 - REGISTRATIONS 7523
 - TURNOUT 3209
 - 43%
- NORTH MESQUITE-APODACA PARK
 - REGISTRATIONS 7660
 - TURNOUT 2671
 - **35%**
- ALAMEDA-WOMEN'S PIONEER PARK
 - REGISTRATIONS 1785
 - TURNOUT 715
 - 40%

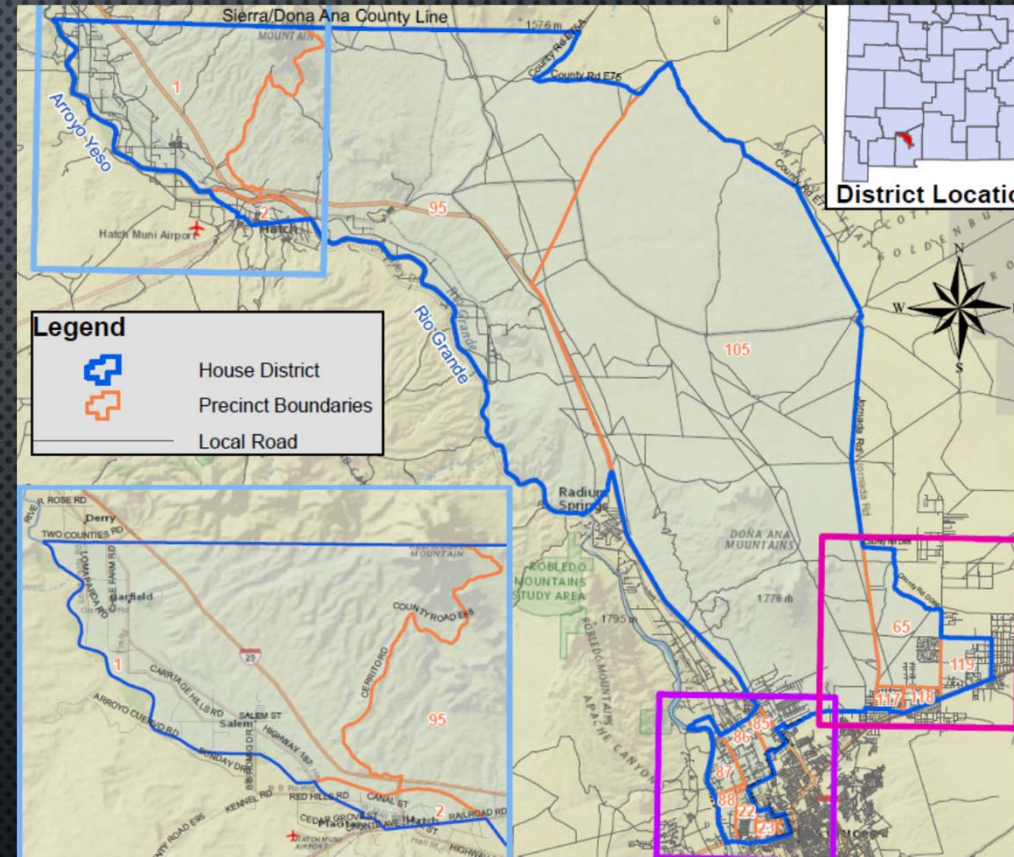
Scroll Down



DISTRICT 36

- SALEM-N. HATCH-RINCON
- E. DOÑA ANA/N.DELRAY-Hwy 70/HOMAN
- SHALOM COLONY-VISTA
- MAYFIELD AREA

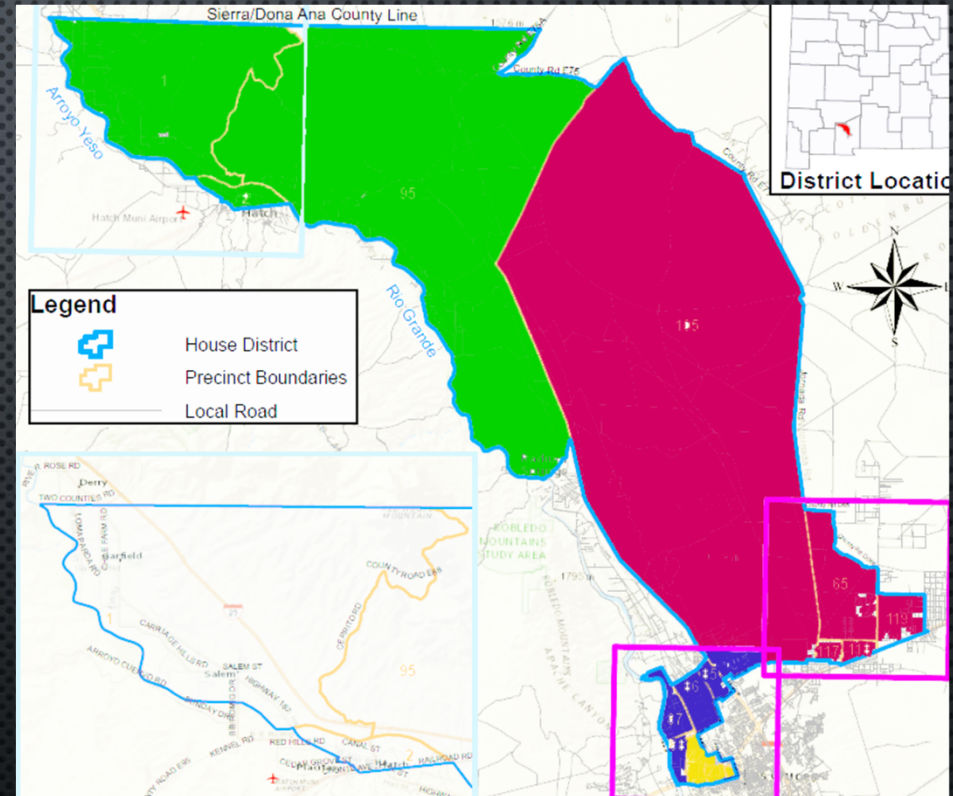
Scroll Down



DISTRICT 36

- SALEM-N. HATCH-RINCON
 - REGISTRATIONS 1167
 - TURNOUT 435
 - 37%
- E. DOÑA ANA/N. DELRAY-Hwy 70/HOMAN
 - REGISTRATIONS 5935
 - TURNOUT 1877
 - **32%**
- SHALOM COLONY-VISTA
 - REGISTRATIONS 4225
 - TURNOUT 1928
 - 46%
- MAYFIELD AREA
 - REGISTRATIONS 4363
 - TURNOUT 1663
 - 38%

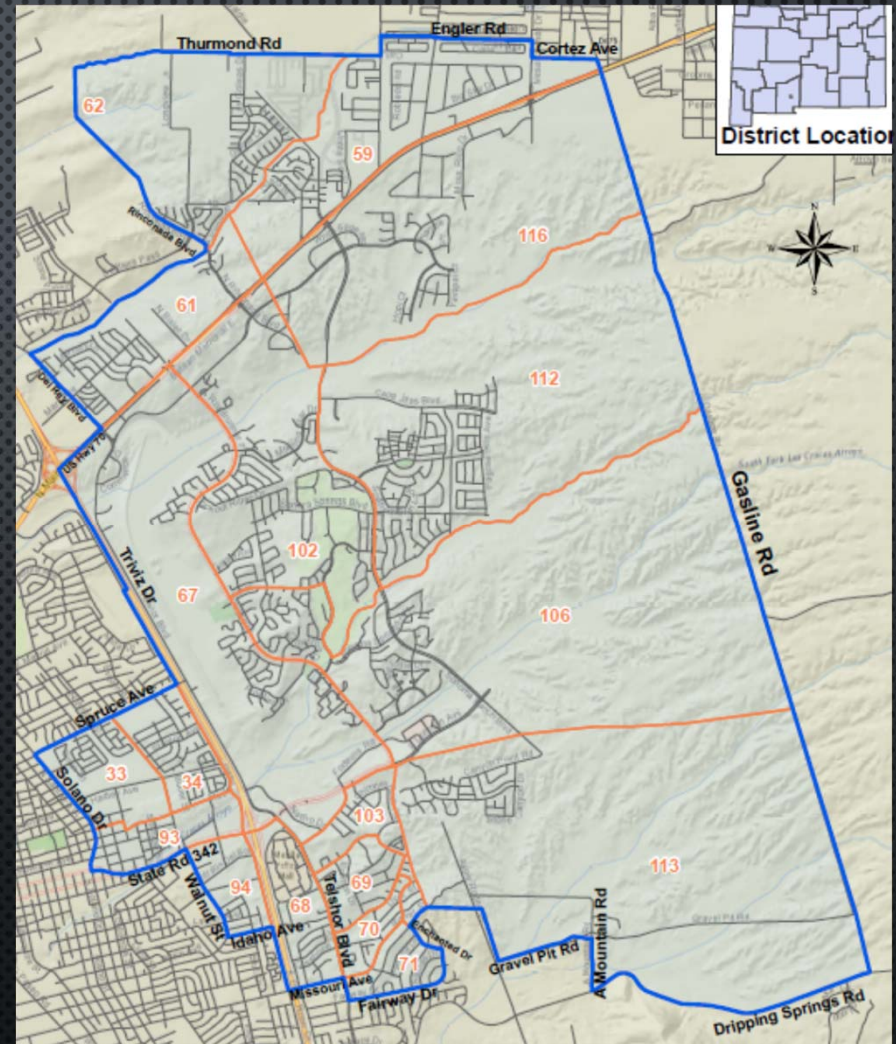
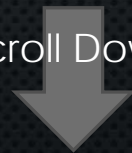
Scroll Down



DISTRICT 37

- JORNADA AREA
- SONOMA RANCH-ROADRUNNER AREA
- EAST OF I-25-LOHMAN/TELHOR FOOTHILLS

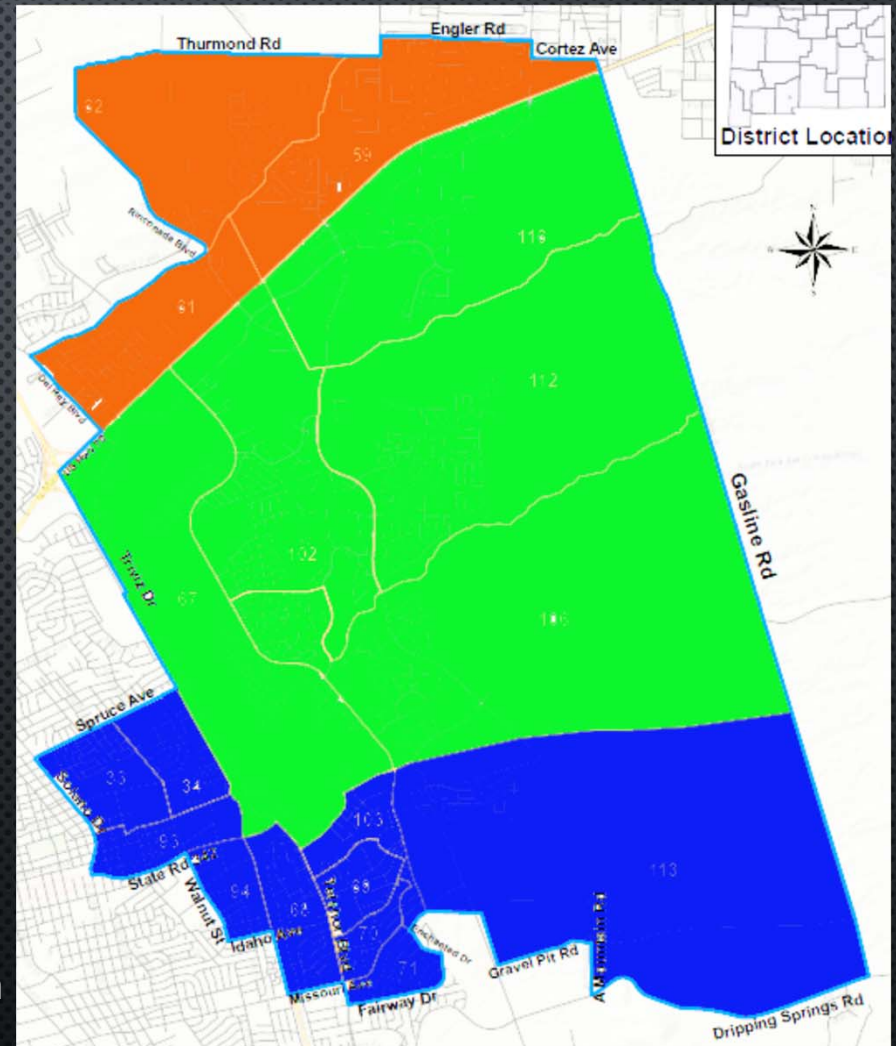
Scroll Down



DISTRICT 37

- JORNADA AREA
 - REGISTRATIONS 4846
 - TURNOUT 2088
 - 46%
- SONOMA RANCH-ROADRUNNER AREA
 - REGISTRATIONS 8918
 - TURNOUT 4210
 - 47%
- EAST OF I-25-LOHMAN/TELHOR FOOTHILLS
 - REGISTRATIONS 7385
 - TURNOUT 2771
 - 37%

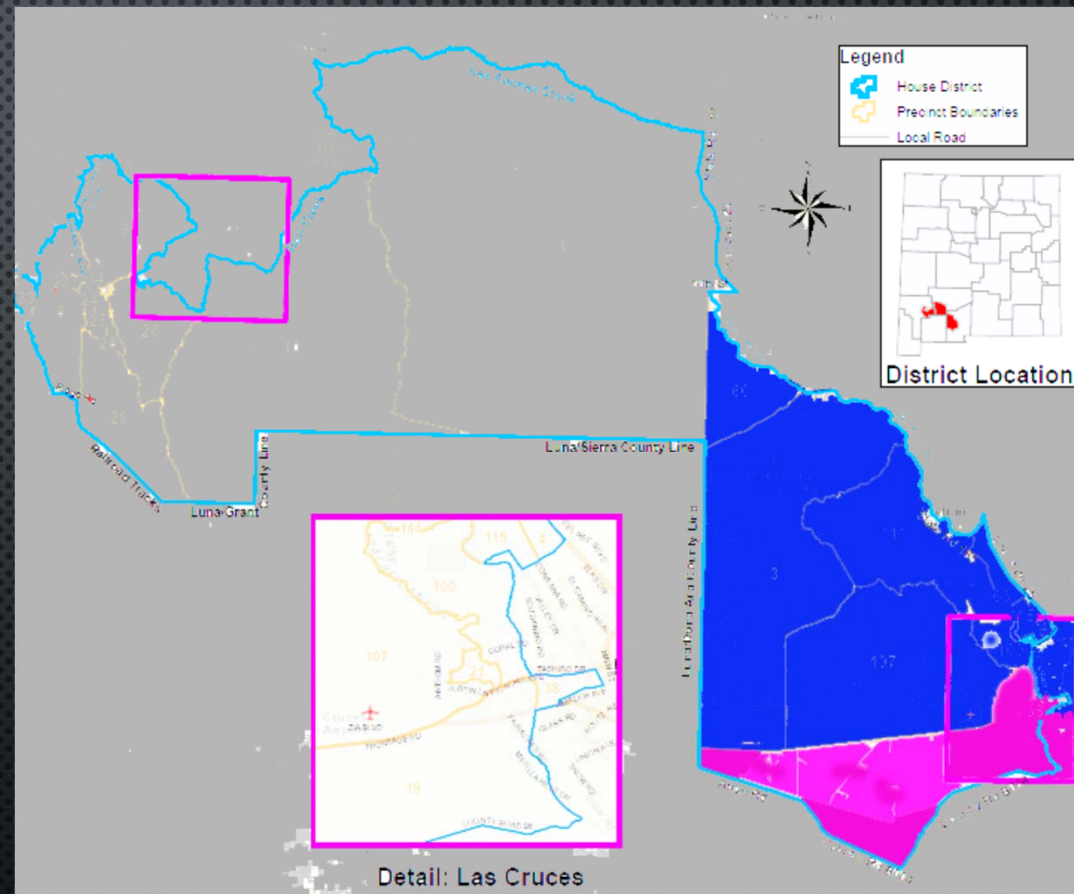
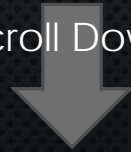
Scroll Down



DISTRICT 39

- HATCH WEST-RADIUM SPRINGS-
W. DOÑA ANA-OLD PICACHO
 - REGISTRATIONS 5191
 - TURNOUT 2553
 - 49%
- PICACHO HILLS-FAIRACRES
 - REGISTRATIONS 3664
 - TURNOUT 1469
 - 40%
- **PRECINCT 4 (W. DOÑA ANA)**
 - REGISTRATIONS 931
 - TURNOUT 307
 - **33%**

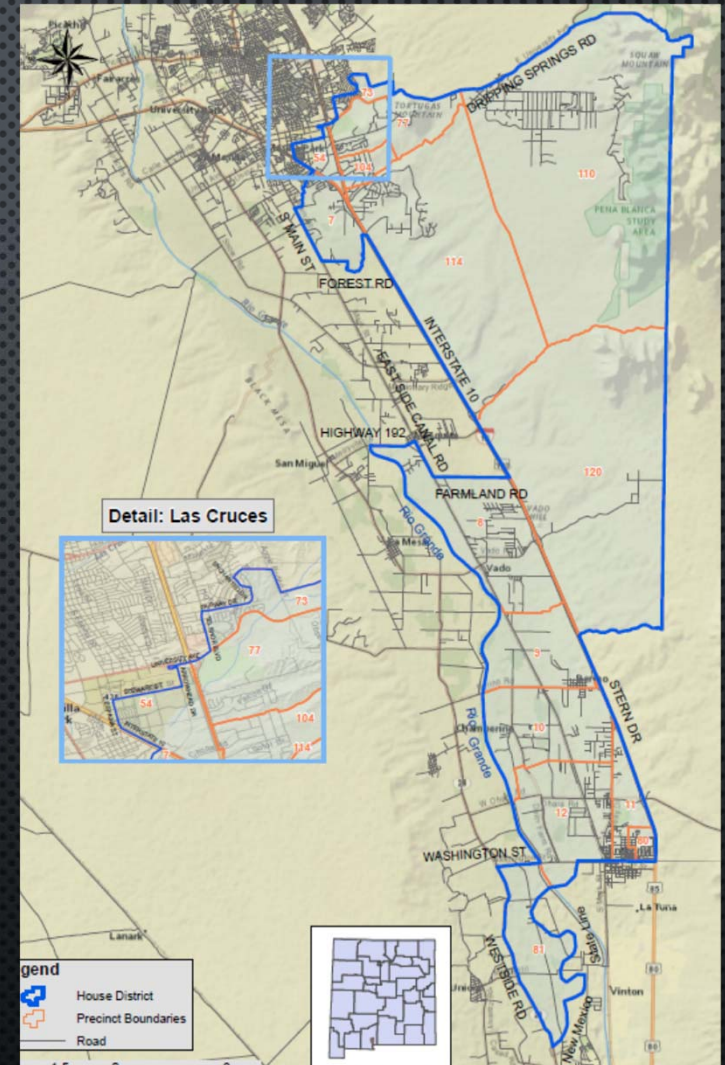
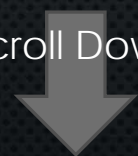
Scroll Down



DISTRICT 52

- UNIVERSITY PARK-PECAN VALLEY NORTH
- TORTUGAS-DRIPPING SPRINGS
- VADO-ANTHONY

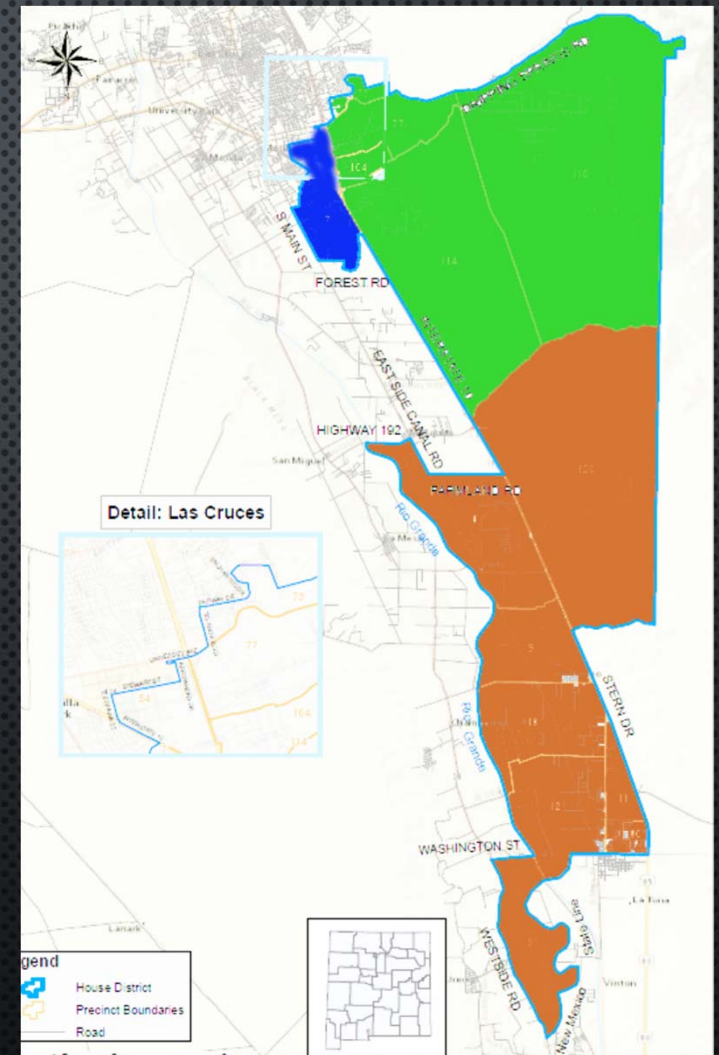
Scroll Down



DISTRICT 52

- UNIVERSITY PARK-PECAN VALLEY NORTH
 - REGISTRATIONS 1979
 - TURNOUT 466
 - **24%**
- TORTUGAS-DRIPPING SPRINGS
 - REGISTRATIONS 4595
 - TURNOUT 2625
 - **57%**
- VADO-ANTHONY
 - REGISTRATIONS 5984
 - TURNOUT 1407
 - **24%**

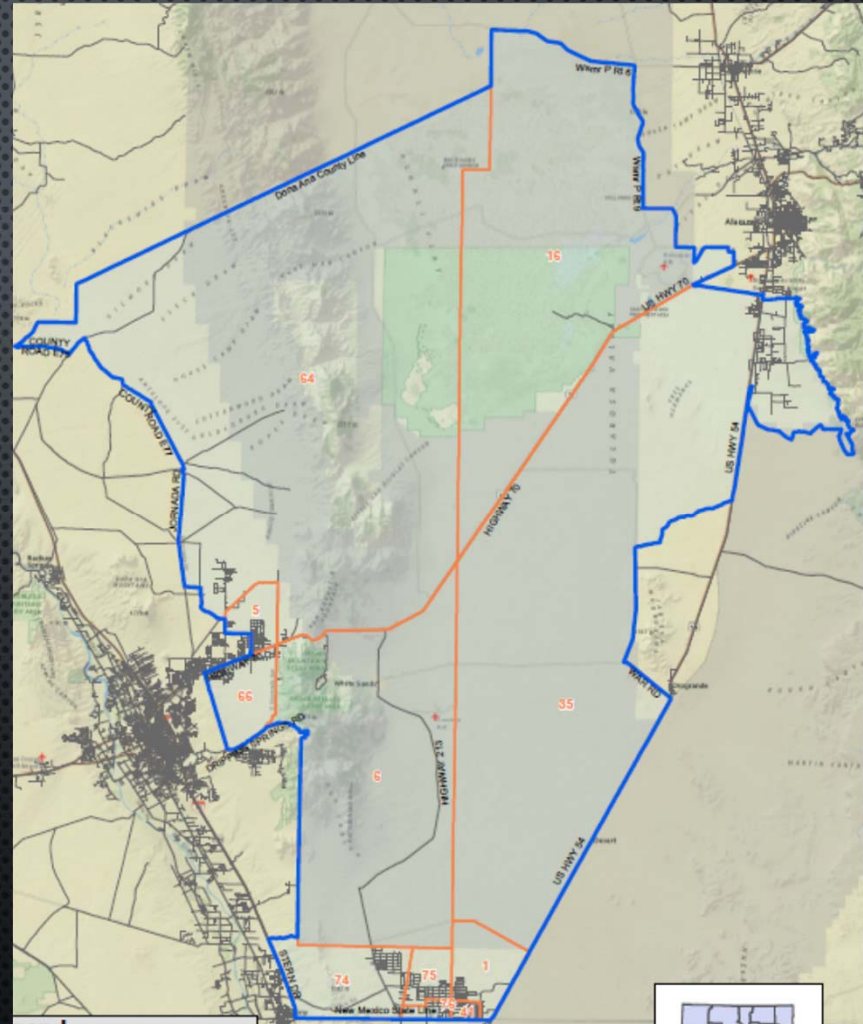
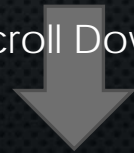
Scroll Down



DISTRICT 53

- CHAPARRAL
- ORGAN-MOONGATE

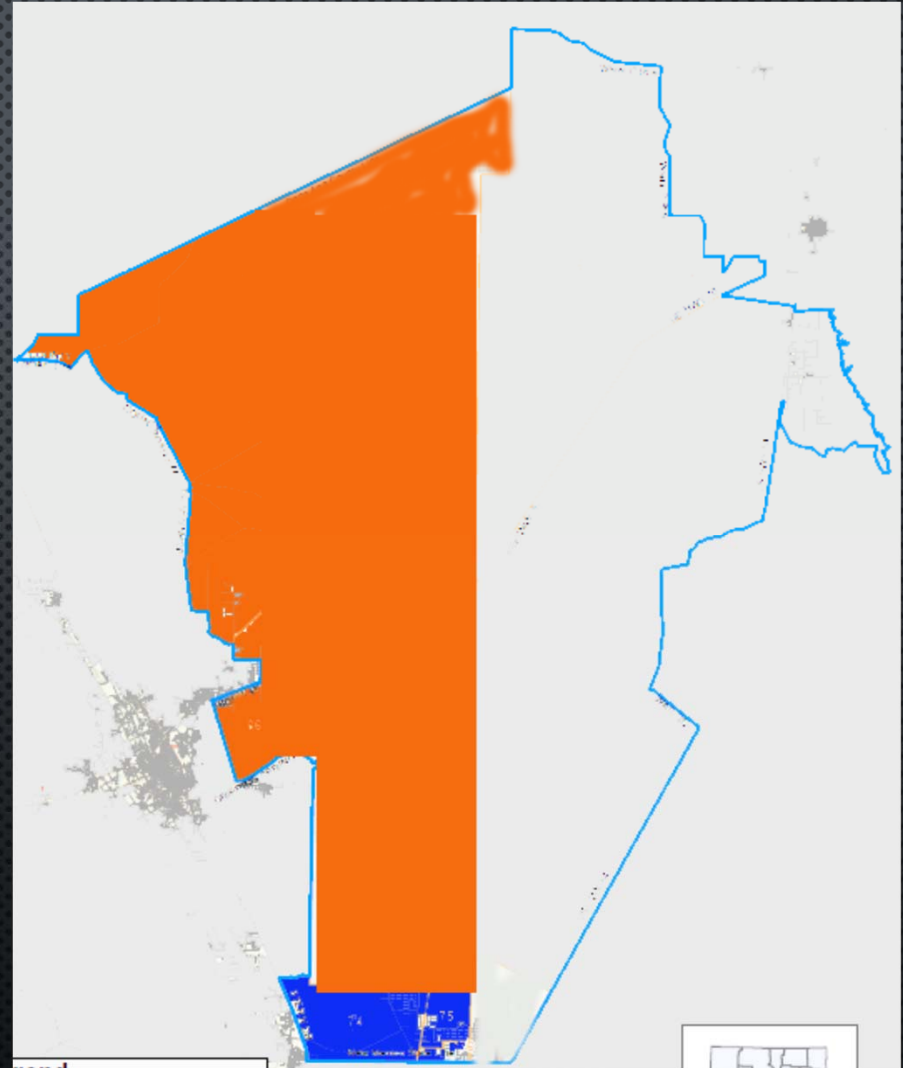
Scroll Down



DISTRICT 53

- CHAPARRAL
 - REGISTRATIONS 2783
 - TURNOUT 685
 - **25%**
- ORGAN-MOONGATE
 - REGISTRATIONS 3981
 - TURNOUT 1256
 - **32%**

Scroll Down



2ND CONGRESSIONAL DISTRICT

- DE BACA COUNTY 56%
- CATRON COUNTY 56%
- GUADALUPE COUNTY 53%
- HIDALGO COUNTY 46%
- SIERRA COUNTY 46%
- SOCORRO COUNTY 44%
- GRANT COUNTY 44%
- LUNA COUNTY 44%
- VALENCIA COUNTY 43%
- LINCOLN COUNTY 43%
- CIBOLA COUNTY 39%
- OTERO COUNTY 39%
- EDDY COUNTY 38%
- CHAVES COUNTY 38%
- DOÑA ANA COUNTY 36%
- LEA COUNTY 29%

END